

FUSSEN

داینا دنت

F200

IMAGE PLATE SYSTEM



داینا دنت
نماینده انحصاری فیوژن در ایران
fussengroup.ir

CE NMPA

V1.0 20240301

ABOUT FUSSEN

FUSSEN is a leading global provider of digital solutions for dentistry. Since its establishment in 2010, FUSSEN has been committed to providing comprehensive digital solutions for dental clinics, facilitating the digitized management of imaging equipment and supporting the dental industry in achieving full lifecycle management. Our products are distributed in over 50 countries worldwide, serving over 80,000 dental clinics globally. With a rich product line and advanced software functionalities, we offer diverse product combinations to meet the unique needs of different clinics and markets, making us the preferred choice for dental professionals.



DENTAL VALUED PRODUCTS

SMALL OUTSIDE SMART INSIDE

Flexible

Comfortable

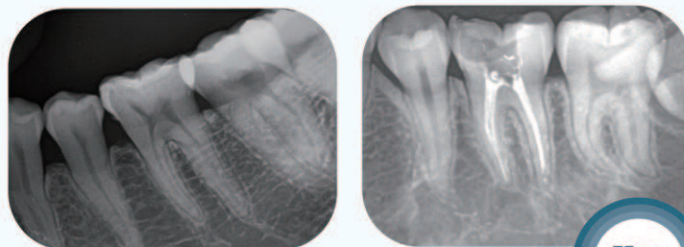
User-Friendly



**Multi-Sized
PSP Options**

RELIABLE AND SUPERIOR IMAGE QUALITY

With a resolution of up to 35µm, it can clearly distinguish images of periodontal ligament, trabecular bone and pulp cavity, helping doctors to easily diagnose and treat clinically.



ULTRA-THIN IMAGING PANELS IN VARIOUS SIZES

- Available in four sizes to meet various clinical needs.
- Each phosphor plate can be used over 2000 times on average.

- With a thickness of 0.1mm and the ability to bend up to 270 degrees, it conforms better to the teeth.



22x31mm
Suitable for children



24x40mm
Suitable for adult anterior teeth



31x41mm
Suitable for adult posterior teeth



27x54mm
Suitable for capturing occlusion



SMART AND FLEXIBLE



Smart Touch Control

Simple operation with the touch screen to insert the phosphor plate tray.



Smart Detection

Automatically recognizes the size of the imaging plate.



Smart Scanning

After inserting the phosphor plate, it automatically reads with a scanning time of less than 20s.



Smart Erasure

Automatically clears the phosphor plate after reading.



Smart Standby

The tray automatically pops out after scanning for easy use next time.



Smart Optimization

Automatically adjusts the image for optimal contrast and brightness.



Smart Energy Saving

After the scanner is paused, it automatically switches to energy-saving mode.

USER-FRIENDLY OPERATION

1 Place the PSP in the correct position in the patient's mouth and shoot with the X-ray unit



2 Take the PSP out of the sleeve cover



3 Put the PSP in the machine for reading



TECHNICAL SPECIFICATION

MODEL	IMAGE PLATE SCANNER F200
Theoretical Resolution	12lp/mm
Grayscale	14bit
Pixel Size	35µm
PSP Scanning Method	Pallet type
Scan Time	< 20s
Dimension	260*167*325mm
Weight	5.2kg
Connection	USB2.0





HQ: 9F, 10F, Building D1, Nanshan Park, 1001 Xueyuan Blvd, Taoyuan Street, Nanshan District, Shenzhen, China

WEB: www.fussengroup.com

CONTACT US:

sales@fussengroup.com

International.support@fussengroup.com

International.marketing@fussengroup.com



AUTHORIZED DISTRIBUTOR

